

D Series Touch Panel



D4



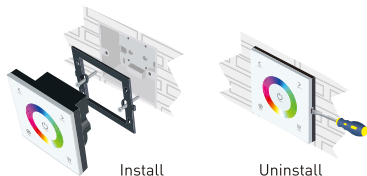
warranty
5 years



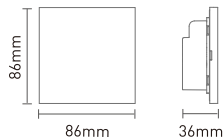
1. Technical Specs:

- Input Voltage: 12-24V DC
- Load Current: 4A×4CH Max 16A
- Max Output Power: 192W/384W(12V/24V)
- Working Temp.: -30°C~55°C
- Dimensions: L86×W86×H36(mm)
- Package Size: L113×W112×H50(mm)
- Weight(G.W.): 208g

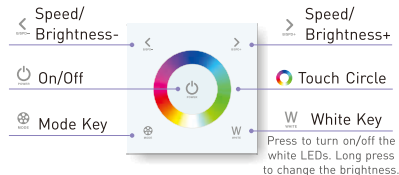
2. Installation Instruction:



3. Product Size:



4. Key Functions:



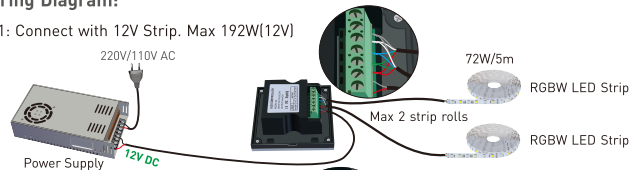
* Long press to turn on/off the tone.

The Changing Mode (Press to Switch):

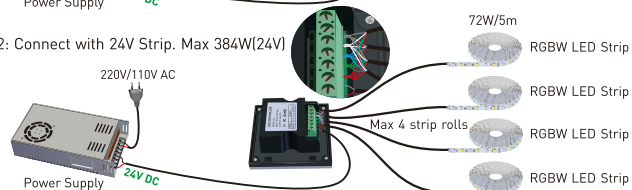
- A. Static Red B. Static Green C. Static Blue D. Static Yellow E. Static Purple F. Static Cyan
G. Static White H. RGB Jumping I. 7 Colors Jumping J. RGB Smooth K. 7 Colors Smooth
L. Static Black (only close RGB)

6. Wiring Diagram:

E.g 1: Connect with 12V Strip. Max 192W(12V)



E.g 2: Connect with 24V Strip. Max 384W(24V)



5. Green Block:

