

## RF Wall Mounted Touch Panel

SR-2830RGB-AC/SR-2830RGB-DC



### Feature

- Backlight
- Glass interface(White & Black)
- Touch sensitive
- Adjust brightness and color



## Parameter

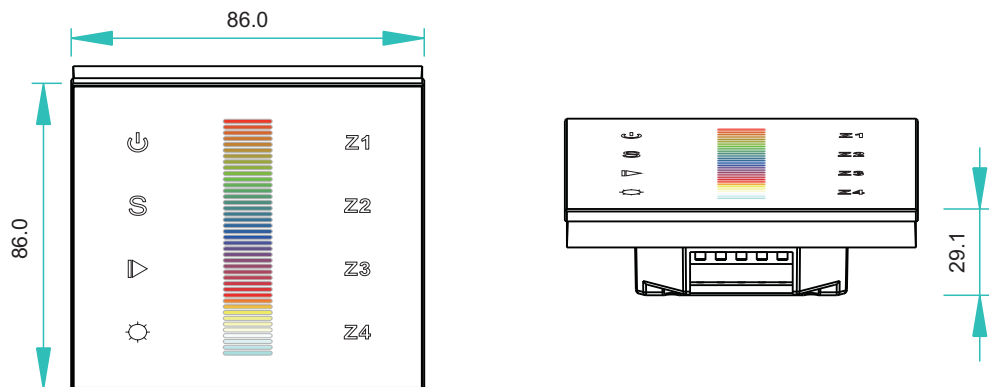
### Remote

| Part No.      | Operation Voltage | Operation Frequency | DIMENSIONS<br>ø/h (mm) | Remarks      |
|---------------|-------------------|---------------------|------------------------|--------------|
| SR-2830RGB-AC | 100-240VAC        | 434MHz/868MHz       | 86x86x29.1             | Touch Sensor |
| SR-2830RGB-DC | 12-24VDC          | 434MHz/868MHz       | 86x86x29.1             | Touch Sensor |

### Receiver

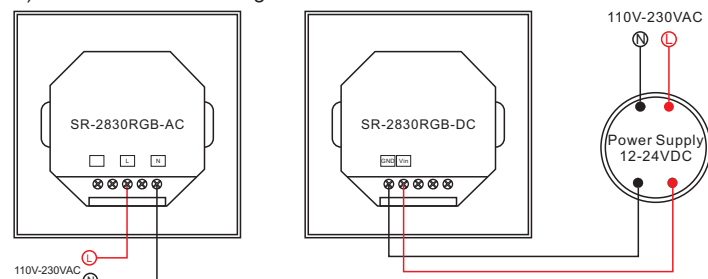
| Part No.   | Input Voltage | Current | Output        | Remarks          |
|------------|---------------|---------|---------------|------------------|
| SR-1009FA  | 12-36VDC      | 4x5A    | 4x(60-180)W   | Constant voltage |
| SR-1009EA  | 12-36VDC      | 4x8A    | 4x(96-288)W   | Constant voltage |
| SR-1009FA3 | 12-36VDC      | 4x350mA | 4x(4.2-12.6)W | Constant current |
| SR-1009FA7 | 12-36VDC      | 4x700mA | 4x(8.4-25.2)W | Constant current |

## Product Size

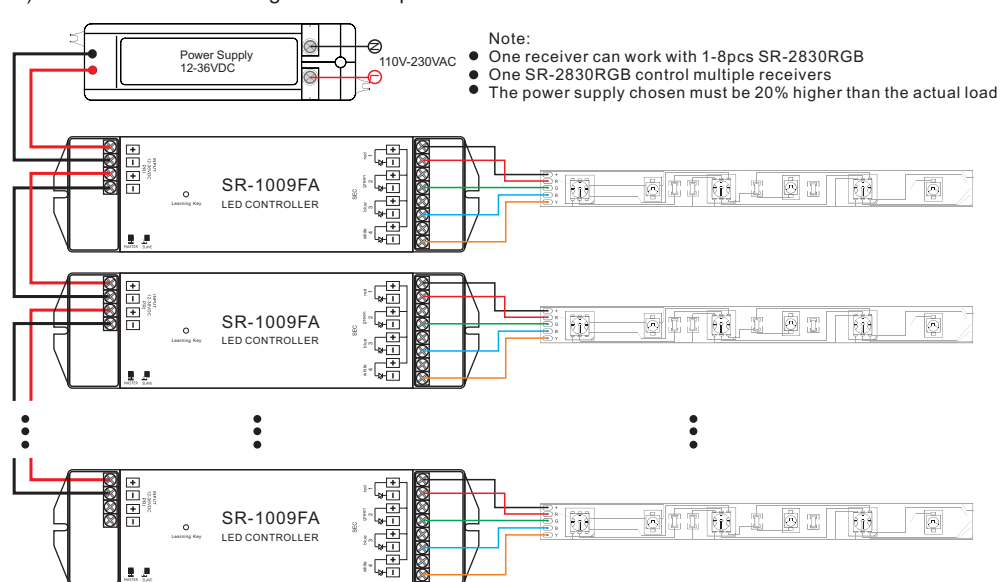


## Wiring diagram

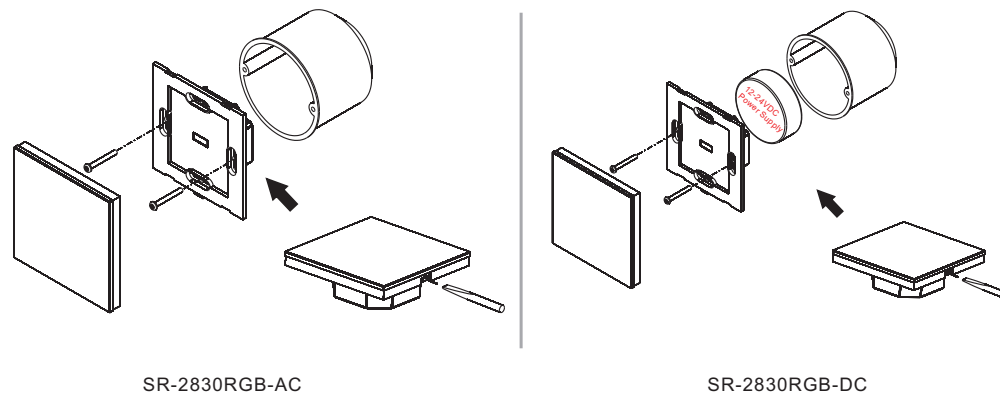
### 1)Sender Connection Diagram



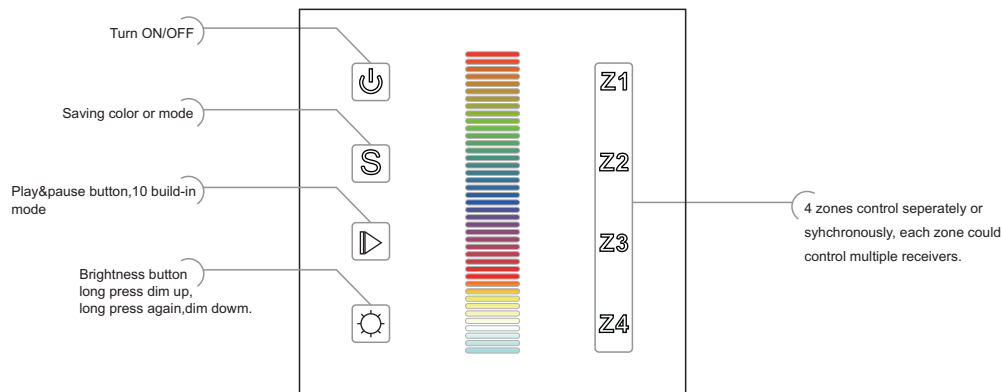
### 2)Receiver Connection Diagram for Multiple Units



## Installation



## Description of buttons



## Operation

### 1. Learning ID with SR-1009 series:

Click learning button on RF receiver (SR-1009XX)→

Short Touch a zone button Z1,Z2,Z3 or Z4 (sender 2830RGB)→Touch dimming slider

The light flick means ID learnt successfully.

Touch zone button Z1/Z2/Z3/Z4 separately over 2 seconds, which will turn ON/OFF separately.

The backlight blue is ON for the zone, yellow is OFF for the zone.

**Notice : Each sender can control 4 different zones separately,each zone can be learned endless receivers,so one sender can control as many receivers as you can.**

**Z1 Z2 Z3 Z4** Short press is choose the zone.  
Long press can turn off/on each zone.

**S** a.Save color :choose a zone or multiple zones from(Z1,Z2,Z3,Z4) →  
Touch dimming slider to get a favorite color →  
Hold **S** button over 2 seconds →  
The light flicking means successfully saved.

b.Save mode:choose a zone or multiple zones from(Z1,Z2,Z3,Z4) →  
press **▶** button,10 build-in modes inside, choose the favorite mode →  
Hold **S** button over 2 seconds-The light flicking means successfully saved.

c.Reply:Short touch button **S** to replay the color or mode just saved.

**▶** Press **▶** Button, mode will run.Press it once,it runs one mode.Press button again,it stops,then press one more time, it will enter next mode.There are total 10 build-ion modes.

**☀** Long press dim up,Long press again,dim down.

## Safety & Warnings

- 1) The product shall be installed and serviced by a qualified person.
- 2) IP20.Please avoid the sun and rain. When installed outdoors, please ensure it is mounted in a water proof enclosure.
- 3) Always be sure to mount this unit in an area with proper ventilation to avoid overheating.
- 4) Please check if the output voltage of any LED power supplies used comply with the working voltage of the product.
- 5) Never connect any cables while power is on and always assure correct connections to avoid short circuits before switching on.
- 6) Please ensure that the cable is secured tightly in the connector
- 7) For update information please consult your supplier.

## Warranty Agreement

1) We provide lifelong technical assistance with this product:

- 3-year warranty. We print date on every products, for example :1125 means year 2011,week 25.The warranty is for free repair or replacement and covers manufacturing faults only.
- For faults beyond the 3-year warranty we reserve the right to charge for time and parts.

2) Limited Warrenty

- Any defects caused by wrong operation.
- Any damages caused by unauthorized removal, maintenance, modifying, incorrect connection and replacement of chips.
- Any damages due to transportation, vibration etc. after purchase.
- Any damages caused by earthquake, fire, lightning, pollution and abnormal voltage.
- Any damages caused by negligence, inappropriate storing at high temperatures and humidity or near harmful chemicals.
- Product has been updated

3) Repair or replacement as provided under this warranty is the exclusive remedy to the customer.