

DALI touch panel

DA2

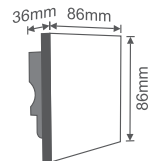


1. Technical Specs:

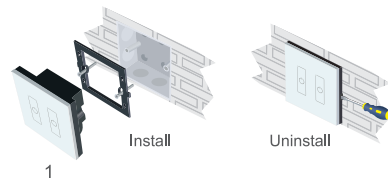
- Power Supply: DALI Power
- Output Signal: DALI
- Dimming Key: 2CH Control
- Working Temperature: -20°C~60°C

- Dimensions: L86×W86×H36(mm)
- Package Size: L113×W112×H50(mm)
- Weight(G.W.): 200g

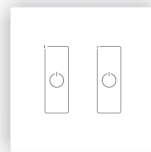
2. Product Size:



3. Installation Instruction:



4. Key Functions:



2CH Switch
Long press to
adjust brightness

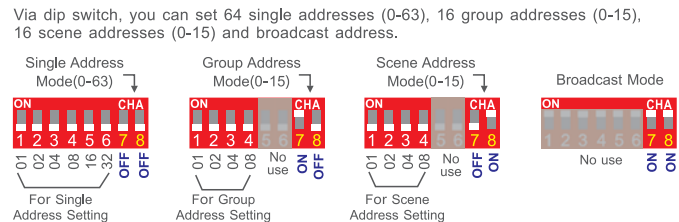
5. Terminals:



Power and Signal
Combined Socket

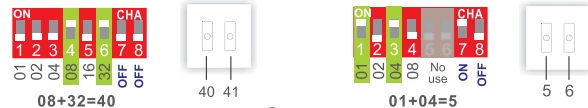
Dip Switch

6. Dip Switch Operation:



Total address value = the sum of the dip switch value, to get the place value when in "on" position, otherwise will be 0.

E.g.1: Set initial address to 40 in Single Address Mode. E.g.2: Set initial address to 5 in Group Address Mode.



7. Wiring Diagram:

