

# D Series Touch Panel



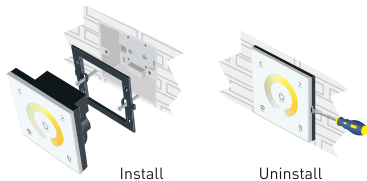
## D2



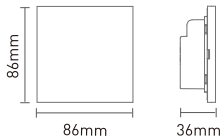
### 1. Technical Specs:

- Input Voltage: 12-24V DC
- Load Current: 4A×2CH Max 8A
- Max Output Power: 96W/192W(12V/24V)
- Working Temp.: -30°C~55°C
- Dimensions: L86×W86×H36(mm)
- Package Size: L113×W112×H50(mm)
- Weight(G.W.): 208g

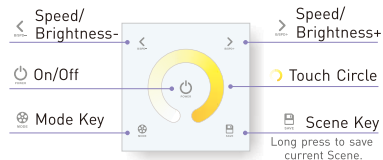
### 2. Installation Instruction:



### 3. Product Size:

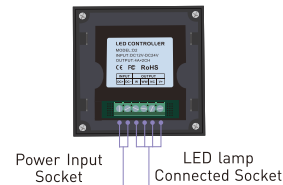


### 4. Key Functions:



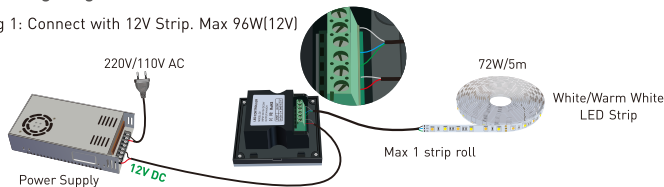
\* Long press to turn on/off the tone.

### 5. Green Block:



### 6. Wiring Diagram:

E.g 1: Connect with 12V Strip. Max 96W(12V)



E.g 2: Connect with 24V Strip. Max 192W(24V)

